

## Ultimo Power House

location Harris Street, Ultimo, New South Wales.  
owner Powerhouse Museum

---

the plaque

type **Historic Engineering Marker**  
location On wall in the level two courtyard of the Powerhouse Museum.

---

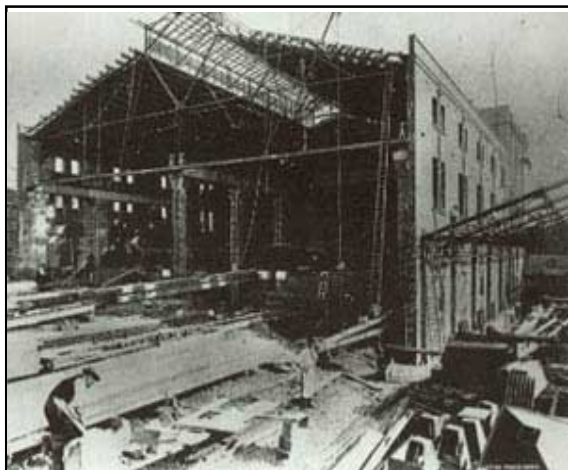
The buildings of the Power House have been restored to form part of the Powerhouse Museum but none of the power station equipment remains.

plaque text

### Ultimo Power House

Constructed between 1897 and 1899 by the Department of Public Works for the Sydney tramway network, this was the first large power station in New South Wales. Initially it contained four reciprocating steam engines driving 850 kilowatt direct current generators. Alternating current generators operating at 25 cycles were added in 1902 and turboalternators from 1905. The state's first pulverised coal fired boilers were commissioned here in 1930. By 1942 the station's capacity had grown to 79,500 kilowatts. It was decommissioned in 1963.

Dedicated by The Institution of Engineers, Australia, 1994.



### *P.B. Elwell (-1899)*

*Elwell established a large electrical engineering works in England, and was involved in pioneering developments including electrical storage batteries, a submarine and electric bus.*

*His businesses collapsed in 1899, and he came to Sydney where he to become Electrical Engineer with the Department of Railways. He played a leading part in the development of Sydney's tramway system and the power station at Ultimo*



### *William Thow (1842 -1926)*

*Thow, born in England, was appointed Locomotive Engineer of the South Australian Railways in 1875. and Chief Mechanical Engineer of the New South Wales Railways in 1889. He advised the government on electric trams for Sydney and design of the Ultimo Power House. He retired in 1911.*